

ATG400 Ultrasonic Through Coating Thickness Gauge



The model ATG400 is a multi-mode ultrasonic thickness gauge. Based on the same operating principles as SONAR, the instrument is capable of measuring the thickness of various materials with accuracy as high as 0.1/0.01 millimeters.

The multi-mode feature of the gauge allows the user to toggle between pulse-echo mode (flaw and pit detection), and echo-echo mode (Ignore paint or coating thickness).

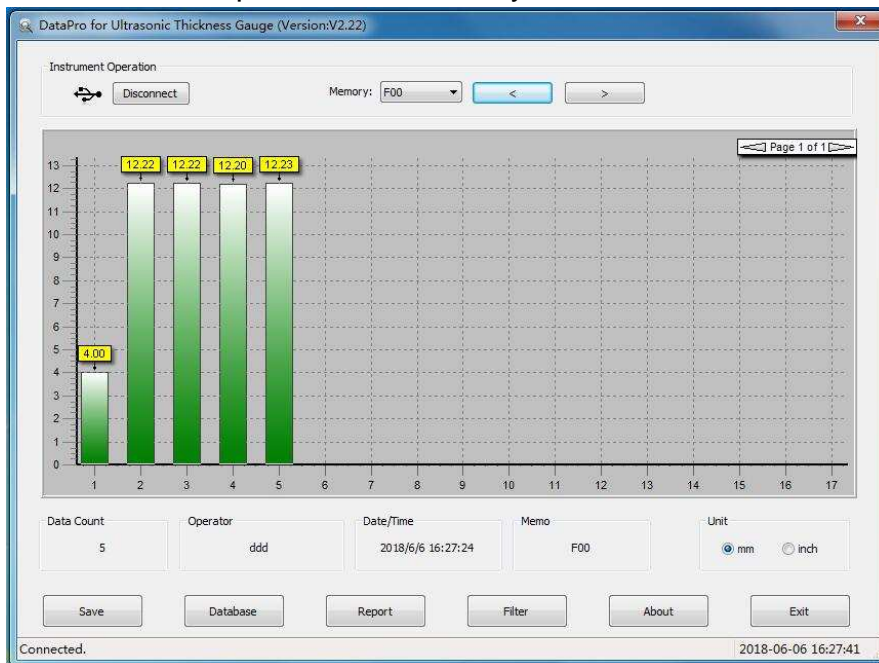
Product Specifications

- 1) Display: 4.5 digits LCD with EL backlight.
- 2) Range: Pulse-Echo mode: (0.65~600)mm (in Steel).
Echo-Echo mode: (3~30)mm Through Coating Mode.
- 3) Sound Velocity Range: (1000~9999) m/s.
- 4) Resolution: 0.1mm/0.01mm
- 5) Accuracy: $\pm (0.5\% \text{Thickness} + 0.01)$ mm, depends on materials and conditions
- 6) Memory for up to 20 files (up to 99 values for each file) of stored values.
- 7) Power Source: Two "AA" size, 1.5 Volt alkaline batteries. 100 hours typical operating time (EL backlight off).
- 8) Communication: USB1.1.
- 9) Outline dimensions: 150mmx74mmx32 mm.
- 10) Weight: 245g
- 11) Operating Temperature: $-20^{\circ}\text{C} \sim +60^{\circ}\text{C}$;
- 12) Storage Temperature: $-30^{\circ}\text{C} \sim +70^{\circ}\text{C}$

13)Relative Humidity $\leq 90\%$;

Main Functions

- 1) Multi-mode: Pulse-Echo mode and Echo-Echo mode.
- 2) Capable of performing measurements on a wide range of material, including metals, plastic, ceramics, composites, epoxies, glass and other ultrasonic wave well-conductive materials.
- 3) Transducer models are available for special application, including for coarse grain material and high temperature applications.
- 4) Probe-Zero function, Sound-Velocity-Calibration function
- 5) Two-Point Calibration function.
- 6) Single point mode and Scan mode. Seven measurements readings per second in single point mode, and sixteen per second in Scan Mode.
- 7) Coupling status indicator showing the coupling status.
- 8) Units: Metric/Imperial unit selectable.
- 9) Battery information indicates the rest capacity of the battery.
- 10)Auto sleep and auto power off function to conserve battery life.
- 11)Optional software to process the memory data on the PC.



Thickness Report

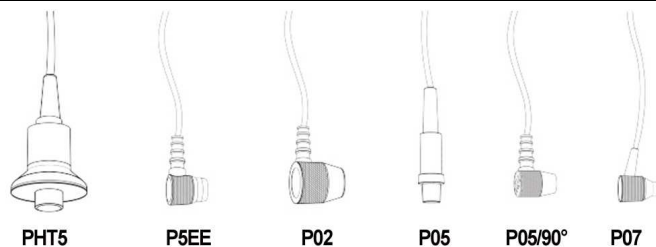
Report NO.:		Report Time:	2018/6/6 16:28		
Operator:	ddd	Test Time:	2018/6/6 16:27		
Data count:	5	Unit:	mm		
[1]:	[2]:	[3]:	[4]:	[5]:	
4.00	12.22	12.22	12.20	12.23	

Accessories

	No	Item	Qty.	Note
Standard Accessories	1	ATG400 Main body	1	
	2	Probe P5EE(5MHz)	1	
	3	Couplant	1	
	4	Instrument Case	1	
	5	Operating Manual	1	
	6	Packing List	1	
	7	Guarantee Card	1	
	8	Calibration Certificate	1	
Optional Accessories	9	Probe P05/90 ^o (5MHz)	1	See Probe Selection Table
	10	Probe P07(7MHz)	1	
	11	Probe PHT5(5MHz)	1	
	12	DataPro Software	1	
	13	Communication Cable	1	

Transducer Selection

Model	Freq MHz	Diam mm	Measuring Range	Lower limit	Description
P5EE	5	12	Echo-Echo mode: (3~30)mm	Φ20mm×3.0mm	Trough Coating Measurement
P05	5	10	1mm~600.0mm (In Steel)	Φ20mm×3.0mm	Normal Measurement
P05 /90°	5	10	1mm~600.0mm (In Steel)	Φ20mm×3.0mm	Normal Measurement
P07	7	6	0.65mm~ 200.0mm (In Steel)	Φ15mm×2.0mm	For thin pipe wall or small curvature pipe wall measurement
PHT5	5	14	1~600mm (In Steel)	30mm	For high temperature (lower than 300°C) measurement.



USB Cable



Data Software